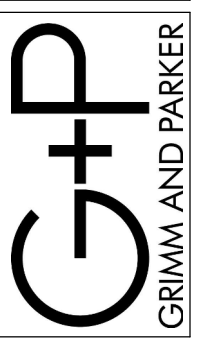
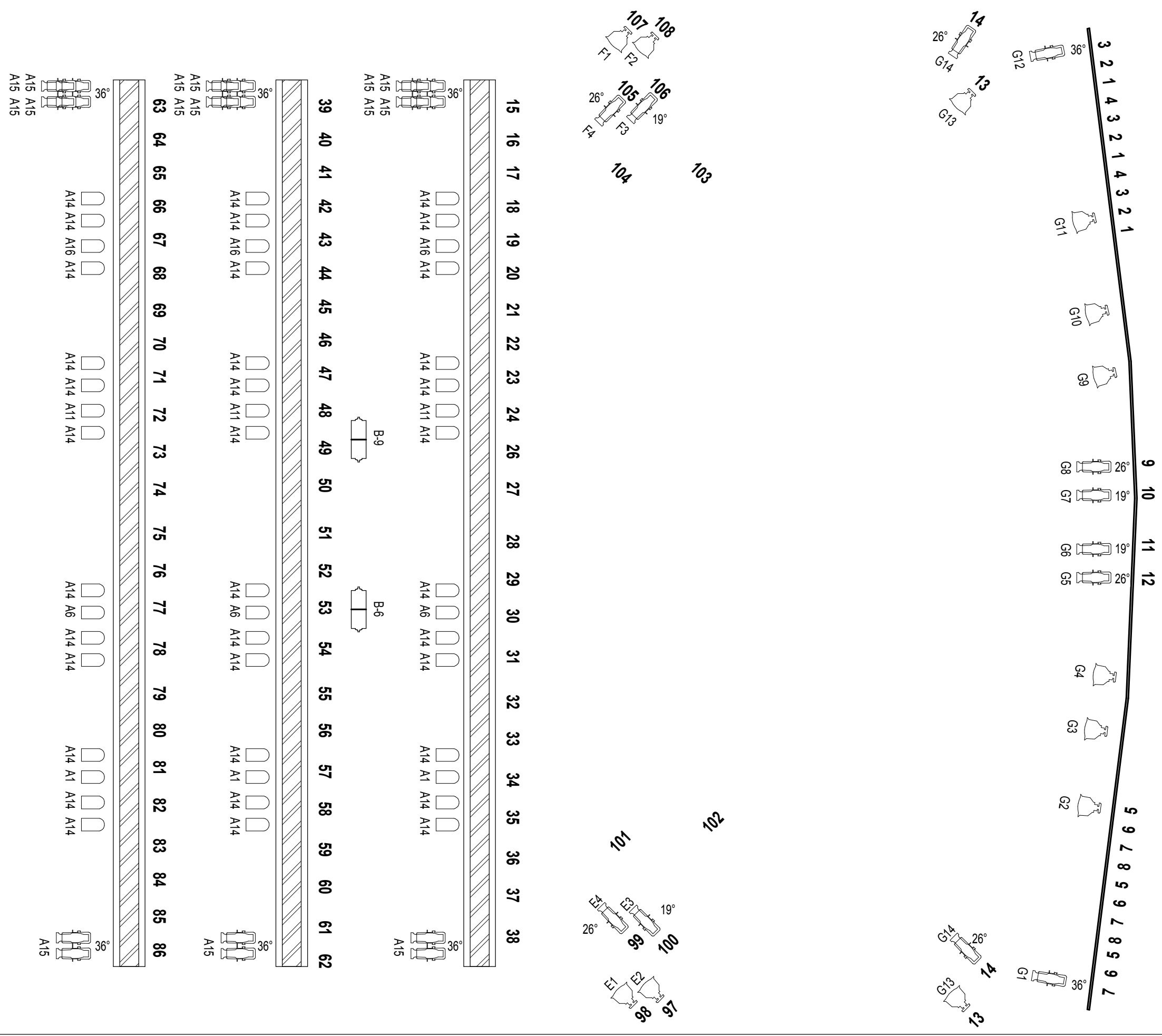


MARYLAND THEATRE LIGHT PLOT
MD THEATRE HAGERSTOWN, MD



INSTRUMENTAL KEY

SYMBOL	QTY	DESCRIPTION
	3	LIGHT TRUSS
	4	ALTMAN SHAKESPEARE 30 DEGREE 575 W GLA
	7	ALTMAN PHOENIX 19 DEGREE 575W GLA
	7	ALTMAN PHOENIX 26 DEGREE 575W GLA
	10	ALTMAN PHOENIX 36 DEGREE 575W GLA
	4	ALTMAN PHOENIX 50 DEGREE 575W GLA
	48	PAR 64 1000W MFL FFR
	12	ALTMAN 65Q 6" FRESNEL 500 W BTL
	4	BROAD CYC-2 CELL 1000 W FFT



THIS LIGHT PLOT REPRESENTS THE MARYLAND THEATRE'S HOUSE HANG, FOR OUR FULL LIGHTING INVENTORY PLEASE SEE THE TECHNICAL SPECIFICATIONS TAB AT WWW.MDTHEATRE.ORG